



PLYMOUTH HISTORICAL SOCIETY

May 1997

VOLUME XVI

NUMBER 1



*Plymouth
Historical
Society*

*Sunday
May 18th
1-4 p.m.*

"Early Plymouth History Revisited"

The program will be informal with anyone and everyone sharing stories of the past. Please bring old pictures of "Early Plymouth". We especially invite our Senior Citizens who have wonderful memories and stories to share from their pasts.

Please see the attached flyer for more details.

The schedule is as follows:

- A short business meeting at 12:00 to 1:00 pm with election of Board of Directors.
- Program and Open House from 1:00 to 4:00 pm.

Museum Donations

New additions to our collection:

- Picture of John Ditter and Laura Jordan
Donated by: Marian Bauer
- Baby Crib and Doll
Donated by: Kay Bertrand
- Green Throw with Pink Flowers for Baby Carriage
Donated by: Kay Bertrand
- Oak Dresser with Mirror and Picture of Owner, Sister Caroline Freund O.S.B.
Donated by: Bernadine Law
- Baby Rattle
Donated by: Caroline Henderschied
- Many Old Pictures around Parkers Lake
Donated by: Harriett Parker Tanner
- 1902-1903 Graduation Program from District #48 School
Donated by: Harriett Parker Tanner
- Hand Embroidered White Bed Cover
Donated by: Kay Berstrand

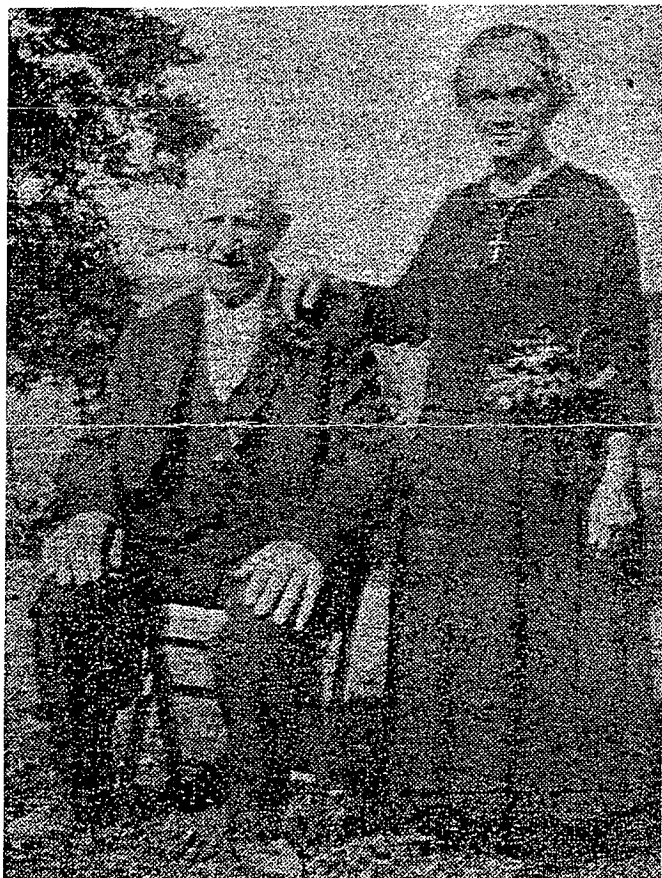
FAMILY HISTORIES

The Plymouth Historical Society has quite a few family histories on file. We welcome people to come and look at them, which may help you trace family roots. The following is a copy of one of the histories on file.

The Neumann's were one of eight families that settled around Medicine Lake in 1858. Those families made up the Parish of St. Francis (later renamed St. Joseph's). Joseph Neumann and Gertrude Rosch were the first couple to be married in the new church.

Joseph and Gertrude Neumann

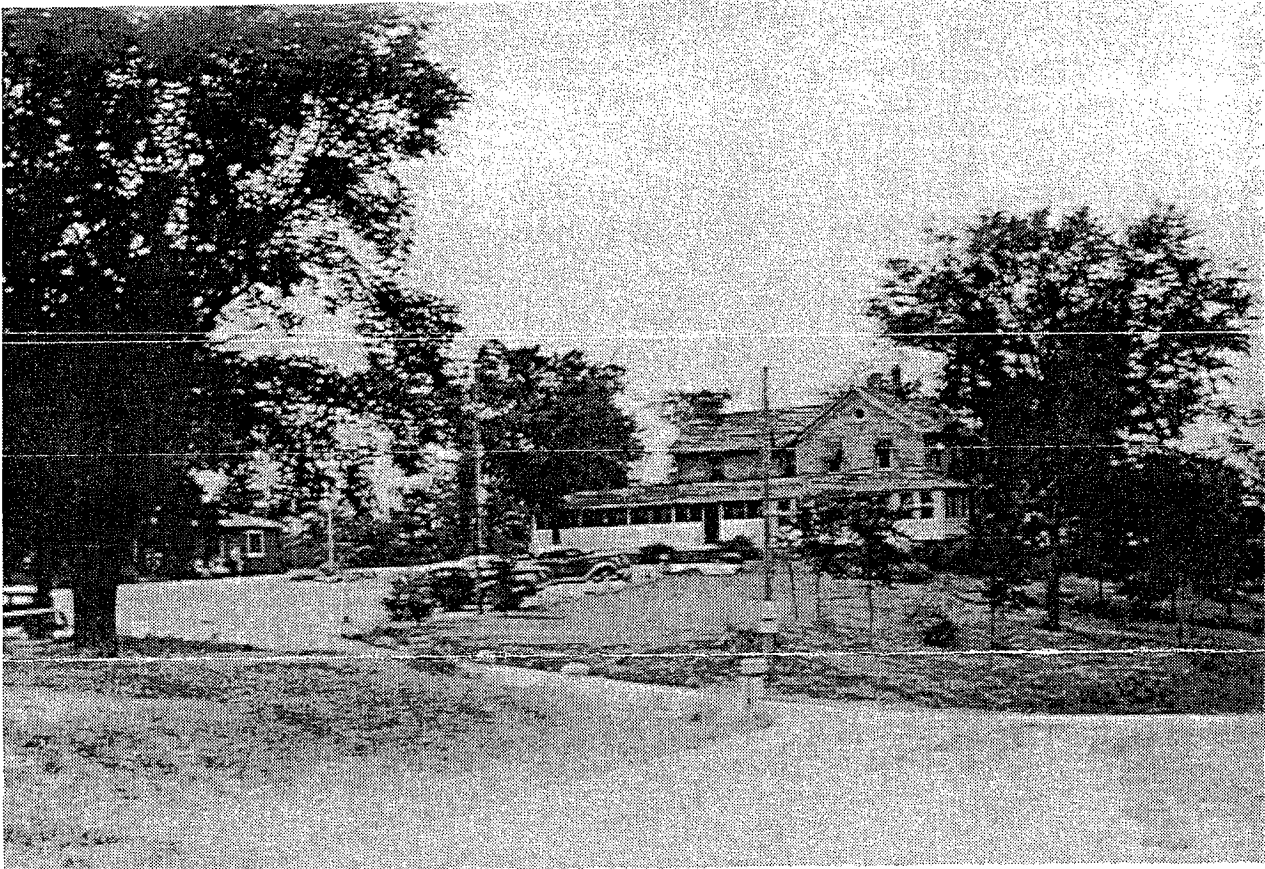
FIRST LOG CHURCH BRIDE



Mr. and Mrs. Joseph Neumann were the first couple married in the old log church at Medicine Lake.

Joseph and Gertrude Neumann brought the following children into this world: Peter, William, Elizabeth "Lizzy", Jake, Mary, Gertrude, Clement, Catherine and Joseph. The records from St. Joseph's Church show four unnamed children buried in the same plot in St. Joseph's Cemetery.

Joseph Neumann's Farm was converted into a Mission Farm. Many locals were employed by the Mission farm.



Joseph and Gertrude Neumann's Farm before it became the Mission Farm

Mailing and Membership List



Attention!! For all those who have forgot and not paid their 1997 dues (due by April 1st), we have included a 1997 Membership Dues Form. Please send in the form or if you have any questions, please call Alberta Casey, 559-9366.

The annual dues are:

Individual.....	\$7.50
Family.....	\$12.00
Lifetime.....	\$100.00

Meetings & Events

- The Plymouth History Fest will be held Saturday, August 9th at the Plymouth Creek Park and Plymouth Historical Building. Be sure to mark your calendar now.
- The monthly meetings are on the fourth Wednesday of the month at 7:30 in the Plymouth Historical Society Building.

Officers

The following are the present officers:

President	Jim Garvey	559-3047
Vice President	Cork Ornborg	475-0930
Secretary	Mable Swanson	545-7705
Treasurer	Harvey Schiebe	545-6127

Did You Know???

1885

In the early 1880's the rapidly growing town of Plymouth came to realize it needed a public building from which to carry on its official business.



It was probably in the fall of 1884 that Clem Menglekoich and Tom Ditter were asked by the Town Board to see about building a town hall. Clem was a carpenter and Tom a lather and plasterer. After much thought and planning, they drew up plans for a modest white frame building that could serve the purpose.

The total cost was agreed upon at \$2,625 for everything, from 6" wide shingles to a stove; this amounted to about \$3 per square foot, and was paid for completely from local taxes.

The idea of building this town hall was overwhelmingly approved by the townsfolk at a special meeting held on the lawn of Dan Parker's house. Those voting "yes" were asked to stand on the west side and greatly outnumbered those opposed standing on the east side.

As the two men studied a map of Plymouth, Clem flicked the ash from his cigar and pointed a long bony finger at the geographic center of Plymouth and proceeded to sell Tom on the logic that this would be a good place to build a building. After this site was chosen, Charles Farrington donated some pasture land with the agreement that a fence be put up to keep his cows from making slippery spots near the building. The road in front was soon to be called Town Hall Cross Road.

Board of Directors

The following is the present Board of Directors:

<u>Name</u>	<u>Telephone</u>	<u>Term</u>
Sharon Anderson	475-1974	1994-1997
Ben G. Broman	559-5721	1994-1997
Alberta Casey	559-9366	1996-1999
Carol Creelman	545-9698	1996-1999
Vern Dotseth	559-3777	1995-1998
Myrtle Eckes	545-6168	1996-1999
Jim Garvey	559-3047	1994-1997
Joe Morris	535-8756	1996-1999
Joyce McCaughey	557-6948	1996-1999
Cork Ornborg	475-0930	1994-1997
Vern Peterson	559-2317	1995-1998
Gary Schiebe	473-4889	1996-1999
Harvey Schiebe	545-6127	1996-1999
Adeline Schmidt	559-2459	1994-1997
Mable Swanson	545-7705	1994-1997

Wanted

The Plymouth Historical Society is looking for:

- Old pictures of Early Plymouth.
- Help cleaning and restoring tools and equipment in the Carriage House.
- Old children toys for Christmas display.
- Old doll house furniture and furnishings.
- Candle holders to fit an old pump organ.

Construction methods were quite simple compared to today's complicated ways. No survey was needed and the building was located by driving corner stakes so that the least number of trees would be removed. Neither architect's plans or inspections were required.

All material had to be hauled by teams of horses or oxen and many hands put up the structure at a traditional "Building Bee".

Construction on the building began in the spring of 1885 and was completed in the late fall of the same year. ■

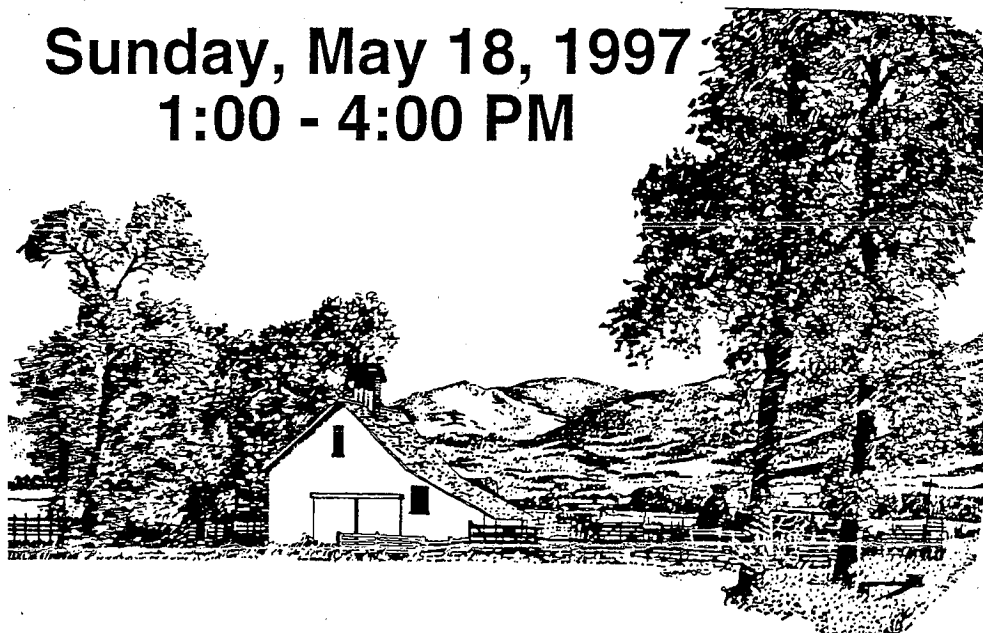
PLYMOUTH HISTORICAL SOCIETY

OPEN HOUSE

"Early Plymouth History Revisited"

Sunday, May 18, 1997

1:00 - 4:00 PM



PROGRAM

SCHEDULE: 1:00 - 4:00
"Early Plymouth History Revisited"

LOCATION: PLYMOUTH HISTORICAL BUILDING
3595 Fernbrook Lane
Plymouth, MN

We have invited members and their friends to come and share "*Early Plymouth History Revisited*". The program will be informal with anyone and everyone sharing stories and pictures of the past. I am sure many of our Senior Citizens have some good stories of "*Early Plymouth*".

MUSEUM OPEN -- REFRESHMENTS SERVED